



SIND CLUB



## A HOME AWAY FROM HOME



## **ENJOY A LEGACY OF TIMELESSNESS...**

**FOR OVER 150 YEARS, THOSE WHO HAVE WALKED THROUGH THESE FAMOUS DOORWAYS AND ENTRANCES, OR LOUNGED ON ITS TERRACES AND BALCONIES, DINED, AND SUPPED IN ITS HALLS, AND WALKED THE PATHS OF ITS LUXURIANT GARDENS, HAVE ALWAYS CONSIDERED THE SIND CLUB THEIR “HOME AWAY FROM HOME” — AN OASIS WITHIN A BUSTLING CITY.**

**THIS TRADITION OF COMFORT AND CARE IS ALSO EMBEDDED IN THE CLUB’S RESIDENTIAL CHAMBERS, WHICH HAVE BEEN AN INTEGRAL PART OF THE CLUB SINCE ITS INCEPTION. THROUGH THE YEARS, THE CLUB’S CHAMBERS HAVE SEEN SEVERAL MODIFICATIONS AND IMPROVEMENTS, WITH NEWLY RENOVATED ROOMS, A FULLY EQUIPPED BUSINESS CENTRE, AND OTHER FACILITIES.**

**THROUGH THEIR CURRENT SUITE OF FIFTY-THREE ROOMS, THE CHAMBERS OFFER MEMBERS, VISITING MEMBERS, AND MEMBERS OF RECIPROCAL CLUBS, A BESPOKE LIVING EXPERIENCE AND AMBIENCE INCOMPARABLE ANYWHERE ELSE IN KARACHI.**

## CENTRAL BLOCK





**THIS BLOCK HAS TWO  
PREMIUM SUITES, BOTH  
WITH KING SIZE BEDS AND  
LIVING ROOMS, ALONG  
WITH ONE DELUXE SUITE  
WITH AN ACCOMPANYING  
LIVING ROOM AS WELL AS  
ONE EXECUTIVE SUITE. THE  
CENTRAL BLOCK ALSO HAS  
AN AIRY AND BRIGHT  
COMMUNAL SITTING  
LOUNGE.**

**PREMIUM SUITE**

**DELUXE SUITE**

**EXECUTIVE SUITE**



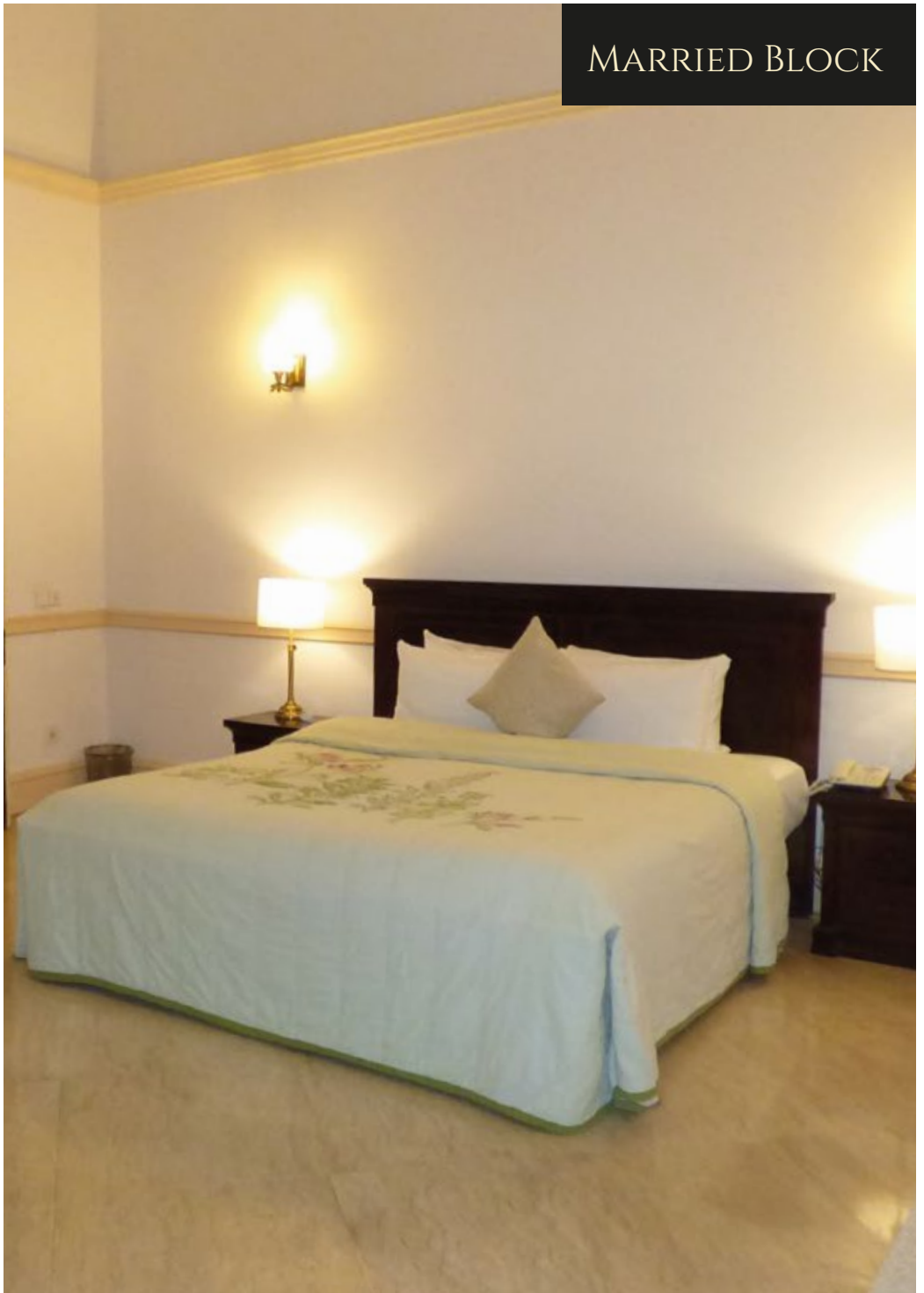
NEW BLOCK





**THIS BLOCK HAS SEVENTEEN DELUXE SUITES, FIVE OF THEM ARE ON THE GROUND FLOOR. TWO CONNECTED SUITES ARE ON THE FIRST FLOOR WITH INTERCONNECTED BEDROOMS. THE NEW BLOCK IS PREFERRED BY BUSINESS TRAVELLERS WHILE FAMILIES ALSO ENJOY THE MODERN OUTLOOK OF THE ROOMS.**

## MARRIED BLOCK





**THIS BLOCK HAS ELEVEN ROOMS  
WITH ONE PRESIDENTIAL SUITE  
AND TEN PREMIUM SUITES.**

---

### **PRESIDENTIAL SUITE**

**IT HAS TWO BEDROOMS, ONE  
KING SIZE BEDROOM AND A TWIN  
BEDROOM WITH SEPARATE BEDS.**

**THE SUITE HAS AN ATTACHED  
DINING ROOM OVERLOOKING A  
SEPARATE LAWN. THIS SUITE IS  
IDEAL FOR FAMILIES WITH A FLAIR  
FOR NATURE AND OUTDOOR  
ENTERTAINMENT.**

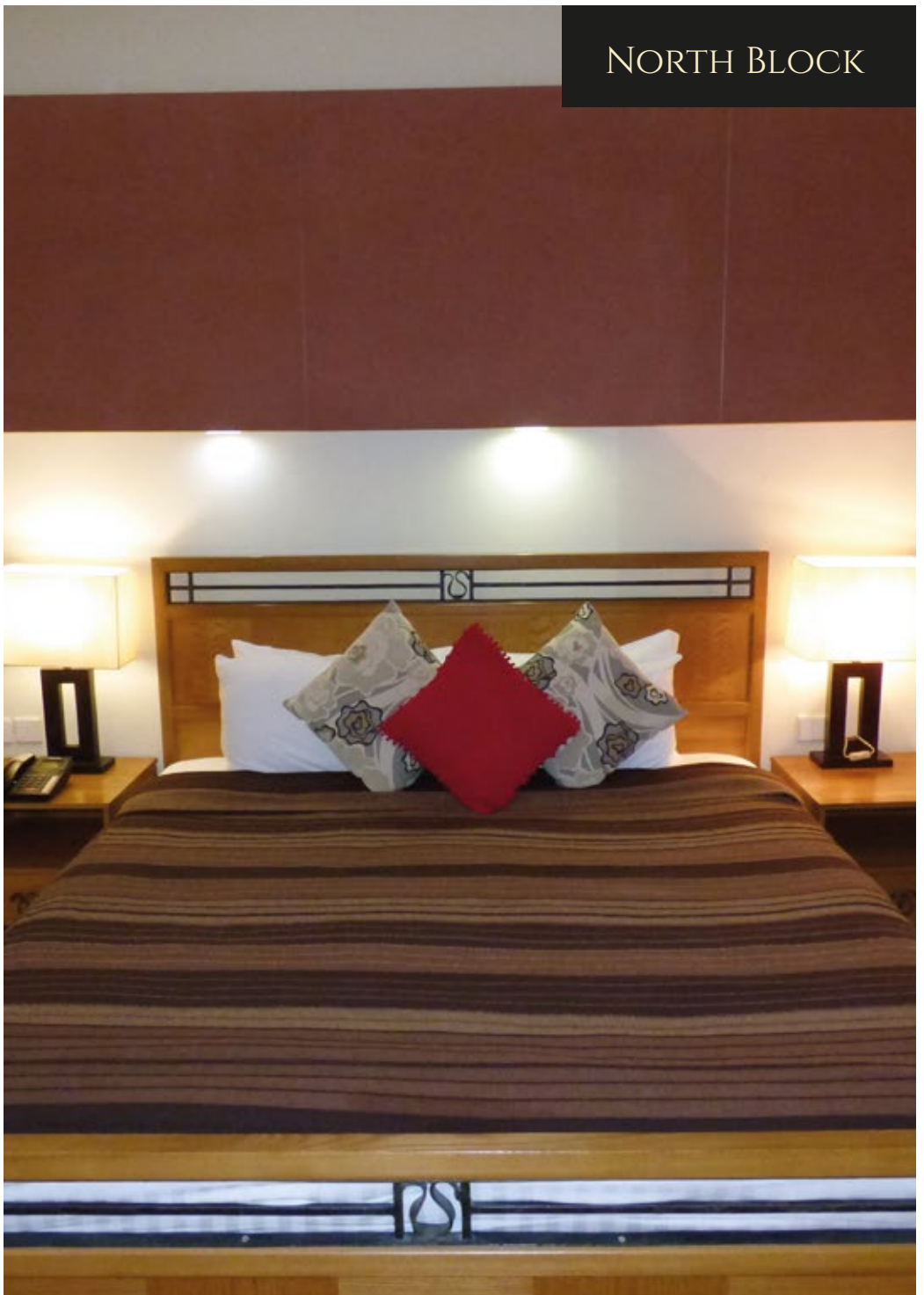
---

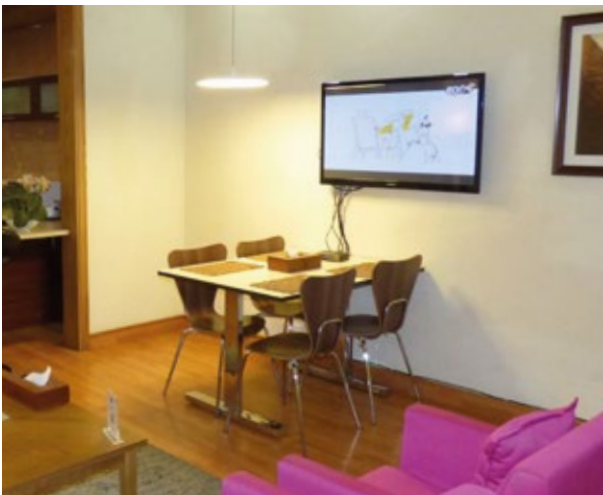
### **PREMIUM SUITES**

**ALL PREMIUM SUITES HAVE KING  
SIZE BEDROOMS AND LIVING  
ROOMS, WITH DINING AREA. ALL  
ROOMS ARE FACING THE MARRIED  
BLOCK GARDEN. THESE SUITES  
ARE PREFERRED BY FAMILIES WITH  
ADEQUATE SPACE FOR A FAMILY  
AND SOCIAL LIFE.**



## NORTH BLOCK





**THIS BLOCK HAS AN  
ARRAY OF TWELVE ROOMS.  
THE ROOMS ARE FURTHER  
DIVIDED INTO TEN  
STANDARD ROOMS AND  
TWO SUITES. THE  
STANDARD ROOMS ARE  
IDEAL FOR SHORT STAYS,  
BUSINESS TRIPS ETC.,  
WHILE THE TWO SUITES  
CAN HOUSE FAMILIES OR  
THOSE WHO PREFER  
SOCIALISING AND LARGE  
GATHERINGS.**

## SOUTH BLOCK





**THIS BLOCK HAS A TOTAL  
OF NINE DELUXE SUITES  
WITH KING SIZE BEDS AND  
SPACIOUS LIVING ROOMS.**

**OVERALL, THE SOUTH  
BLOCK IS A PREFERRED  
CHOICE FOR FAMILIES AND  
MEMBERS VISITING FOR  
SLIGHTLY LONGER STAYS.**



## FACILITIES





**SWIMMING POOL**

**GYMNASIUM**

**WALKING TRACK**

**TENNIS COURTS**

**SQUASH COURTS**

**CRICKET NETS**

**BILLIARDS ROOM**

**HAMMAM**

**BARBER**

**LIBRARY**



## **AMENITIES & SERVICES ACROSS ALL ROOMS**

**COMPLIMENTARY BREAKFAST**

---

**COMPLIMENTARY NEWSPAPER**

---

**TWO COMPLIMENTARY MINERAL  
WATER BOTTLES AT THE TIME OF  
CHECK-IN**

---

**SAFE LOCKER**

---

**FREE WI-FI**

---

**TV WITH A WIDE VARIETY OF CHANNELS**

---

**IRON AND IRONING BOARD**

---

**FREE PARKING**



**PHONE: 92-21-5661445-8**

**FAX: 92-21-5661287**

**SECRETARY@SINDCLUB.ORG.PK**

**WWW.SINDCLUB.ORG.PK**